

KKL2X150LR

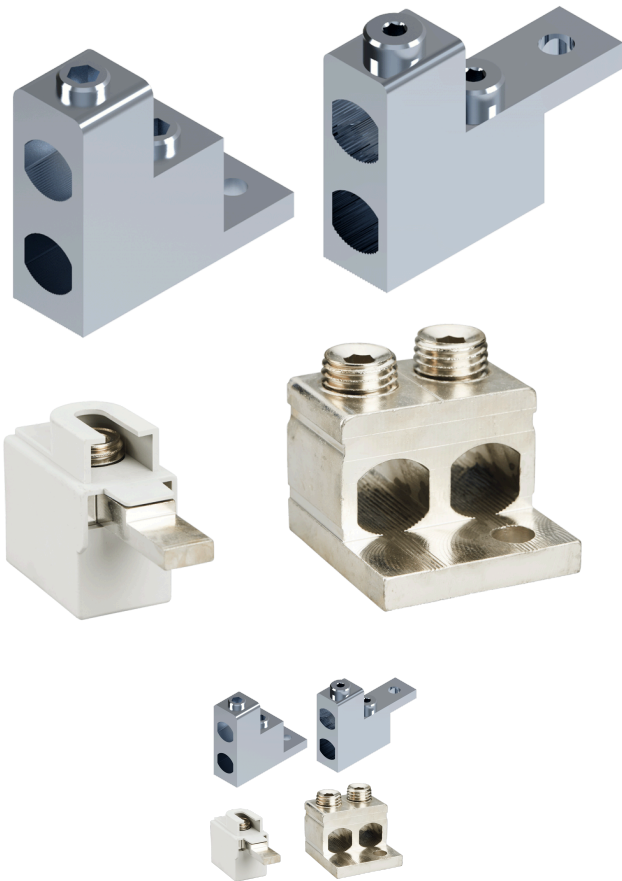
Cable Connectors

- Sales unit = 1 pc
- Suitable for Al/Cu cables
- Material: tin-coated aluminium
- IEC 61238-1 Class A
- Environmentally friendly materials

Conductors per cross section (mm²) table
>>

KKL Installation Instructions >>

Compatibility tables >>



Note: Product images do not represent this product.
Actual product may differ from shown images.

Data subject to change without notice. Always
confirm the data is correct from the seller.

Product details

| | |
|-----------------------------|---|
| SKU | KKL2X150LR |
| Al mm² | 25-150 |
| Color | Standard |
| Cu mm² | 25-150 |
| E-Number | 1942130 |
| EAN | 6419410300459 |
| In (Al) (A) | 500 |
| In (Cu) (A) | 640 |
| Key size | Hex 6 |
| Mounting | Bolt M12 |
| Number of Conductors | 2 |
| Package size | 20 |
| Torque Al/Cu (Nm) | 12 (25-50 mm ²) / 22 (70-95 mm ²) / 38 (120-150 mm ²) |
| Un (V) | 690 |
| Weight (lb/kg) | 0.331 / 0.15 |

Dimensional drawing

